

270mm

90mm

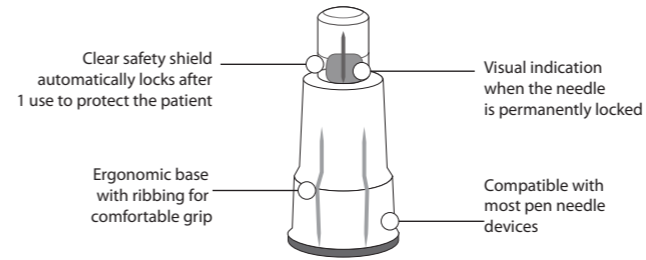
正面

Precautions

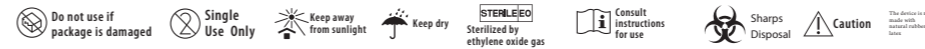
- * Read ALL the instructions prior to use.
- * Check your community's laws and dispose of the pen needles in an appropriate manner.
- * Check the integrity of each primary container before use.
- * Do not use if package has been previously opened or damaged.
- * Do not use after expiration date.
- * Always use a new needle for each injection.
- * Do not re-sterilize or reuse. **It is single use only.**
- * It is only intended for use with insulin injection pen systems.
- * Do not share your needles with other people. **It is single use only.** Sharing used needles can lead to the transmission of diseases.
- * If the needle is blocked, **DO NOT USE IT.**
- * Keep safety insulin pen needles out of the reach of children.
- * Must be 18yrs or older to use.
- * This device is not intended for neonates, newborn infants nor children.
- * It should be stored in dry, ventilated and clean conditions. In Temperatures of 50°-86°F(10°-30°C) and relative humidity of 40%-80%Rh.
- * If you have any questions regarding the product or handling, please contact your doctor, diabetes assistant.

Page 4

TrueComfort SAFETY PEN NEEDLES



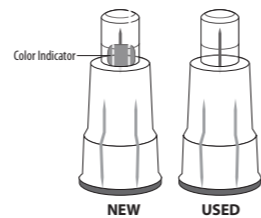
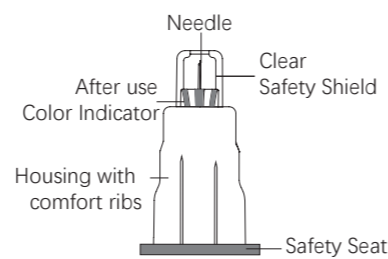
Distributed by:
Home Aide Diagnostics, Inc.
1072 S Powerline Rd.
Deerfield Beach, FL 33442
1-800-915-0116 - www.homeaide.us
Made in China



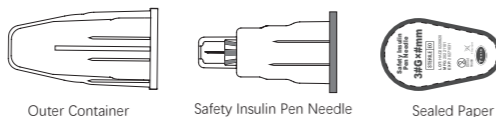
Page1

Product Description

The Safety Insulin Pen Needle is intended for use with pen injector devices for the subcutaneous injection of insulin.
The attached safety shield automatically locks after injection and reduces the occurrence of accidental needle sticks from the patient end of the needle.
The proposed device is not intended for neonates, newborn infants nor children.
The Safety Insulin Pen Needle consists of the needle, Post use color indicator, safety shield, housing, safety seat, outer container and sealed paper.
The needle's after use color indicator will disappear once it has been used.
Product is sterilized by ethylene oxide gas (EO).
The shelf life is five years from the manufacturing date shown on the box.
Do not re-sterilize. Do not use if package is opened or damaged.

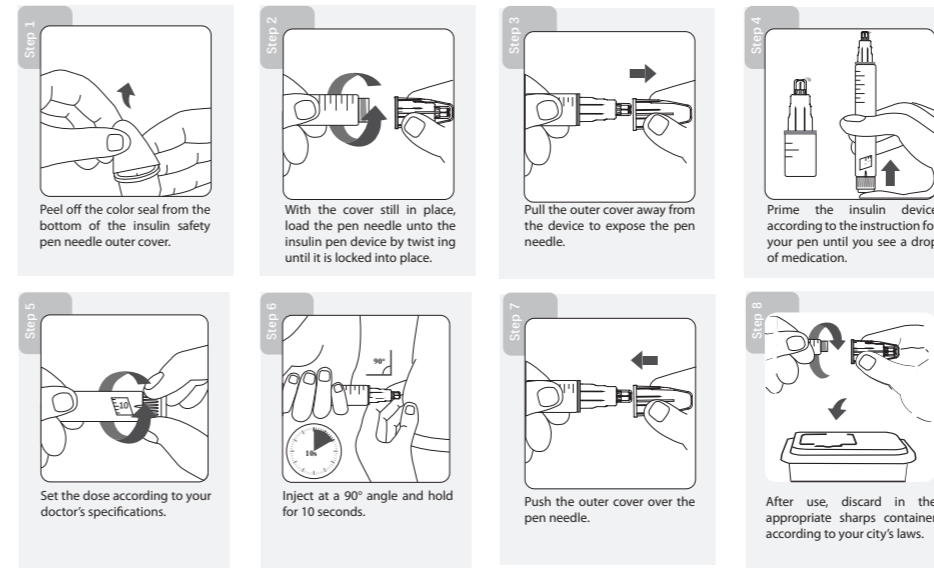


Page 2



反面

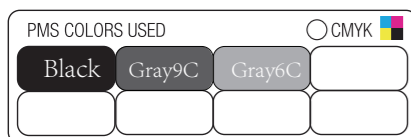
HOW TO USE



Page 3

技术要求

1. 如图制版印刷，尺寸公差为±1mm
2. 印刷应清晰，无错印、漏印，颜色正确
3. 采用80g铜版纸，尺寸：270*90mm，正反印刷



				江苏采纳医疗科技有限公司 Jiangsu Caina Medical Co., Ltd.	
更改人BY	描述DESCRIPTION	日期DATE	版本REV.	材料MATERIAL	图名称TITLE
					安全胰岛素笔针说明书
				制图DRAWN	图号DRAWING NO.
				校对/工艺CHECK/TECHNICS	
				审核REVIEW	
				法规REGULATION	版本REV.
				批准APPROVED	比例SCALE 1:1
					大小SIZE A4
					SHEET 1 OF 1