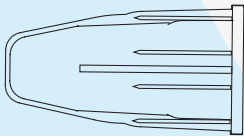




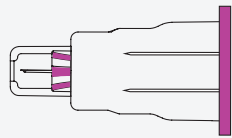
SAFETY INSULIN PEN NEEDLES

User Guide

Parts of Safety Insulin Pen Needle



Outer Cover



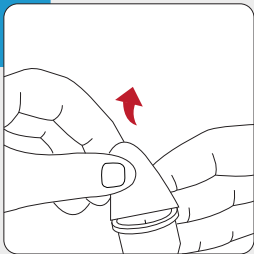
Safety Insulin Pen Needle



Colored Seal

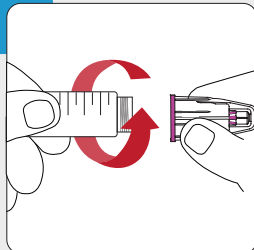
How To Inject

Step 1



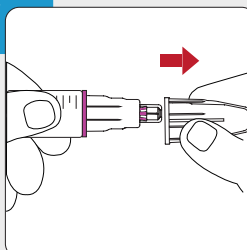
Peel off the colored seal from the bottom of safety insulin pen needle.

Step 2



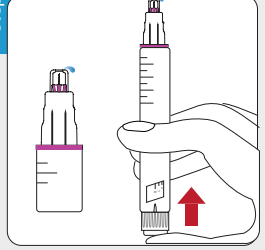
Push the needle straight onto the pen device and twist until it is tight.

Step 3



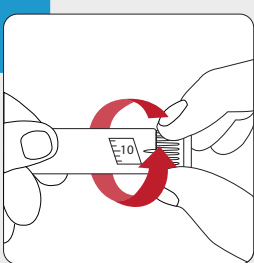
Remove outer cover and set it aside.

Step 4



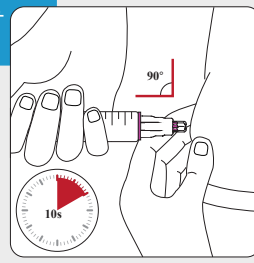
Prime the pen device according to the instructions of pen device and press the thumb button until you see the medication drops.

Step 5



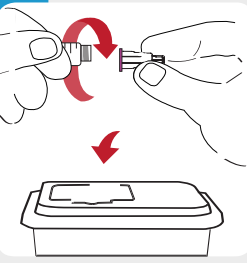
Set insulin dose required.

Step 6



Inject straight in at a 90° angle and hold 10 seconds.

Step 7



After use, discard the safety insulin pen needle properly.



Unactivated

Activated



Home Aide Diagnostics, Inc.
1072 S. Powerline Rd.
Deerfield Beach, FL 33442
1-800-915-0116
www.homeaide.us